

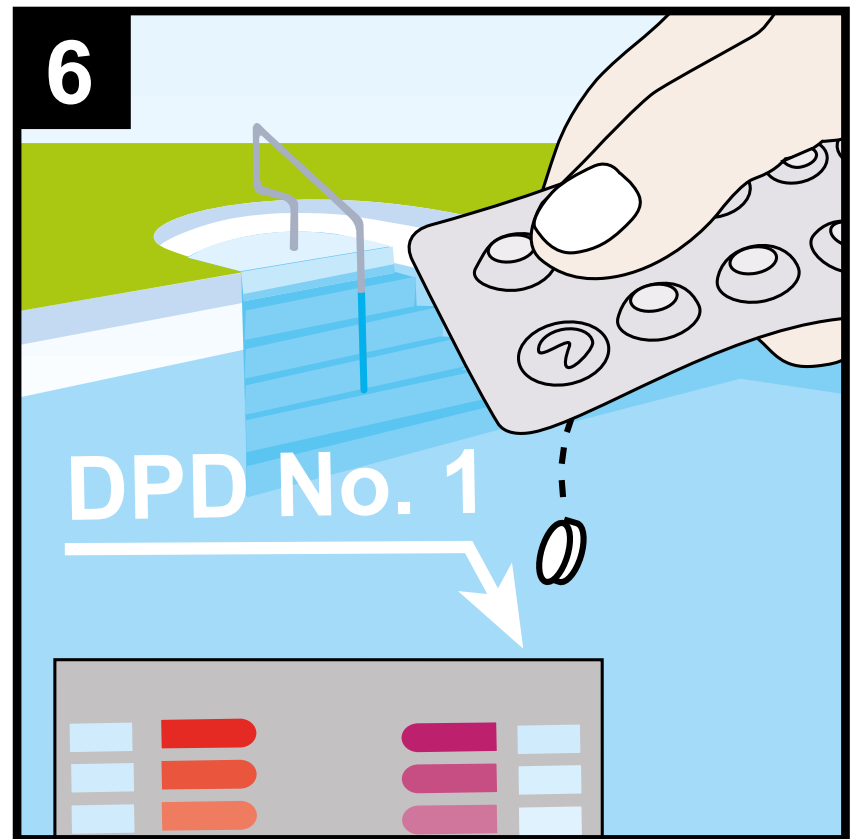
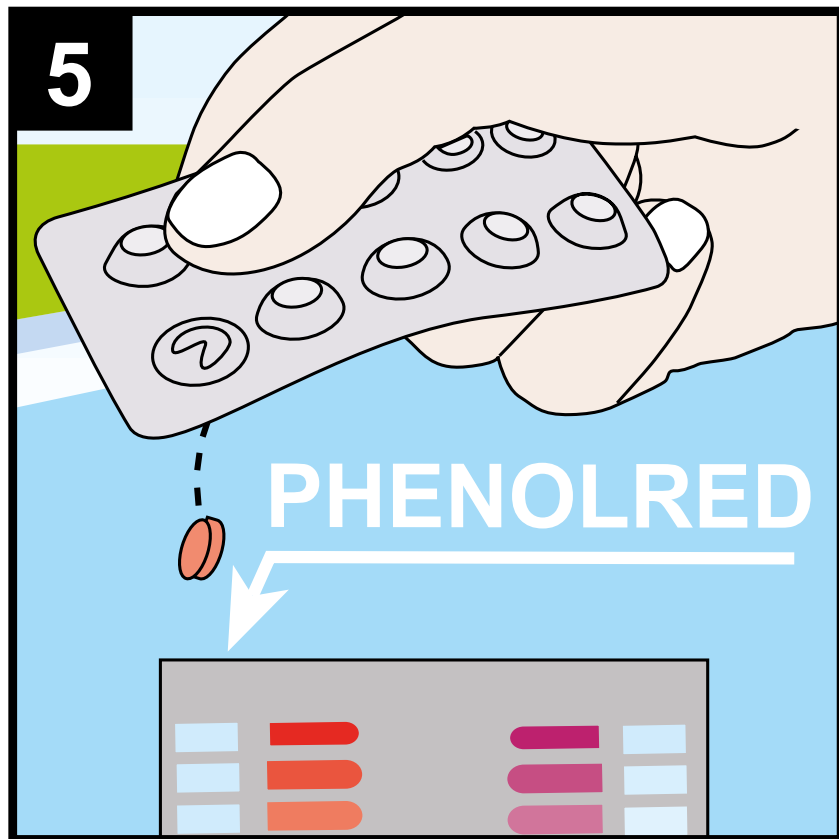
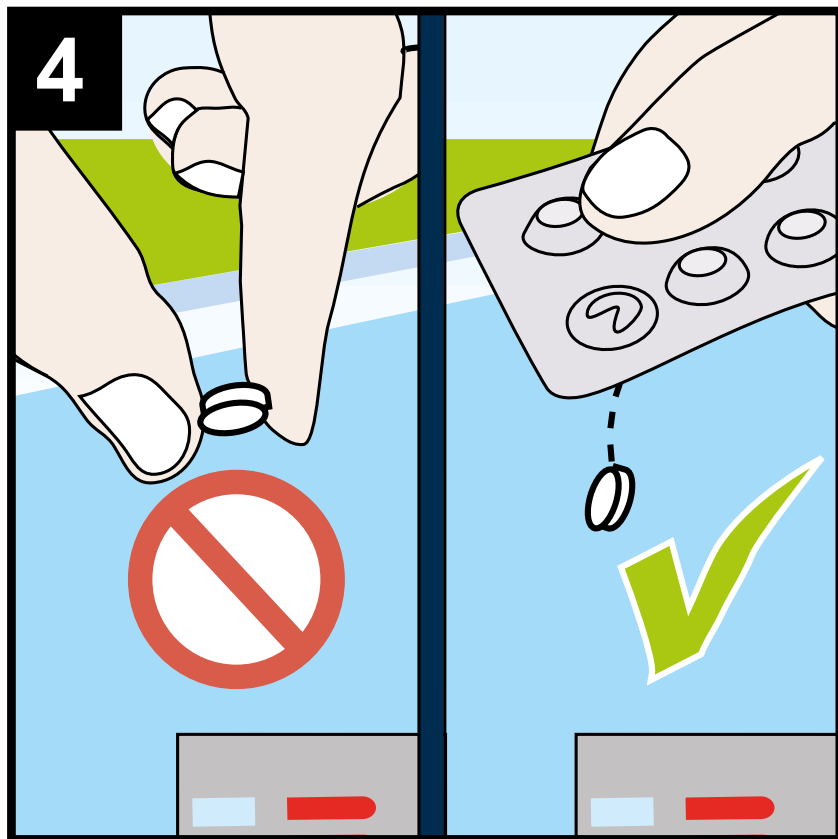
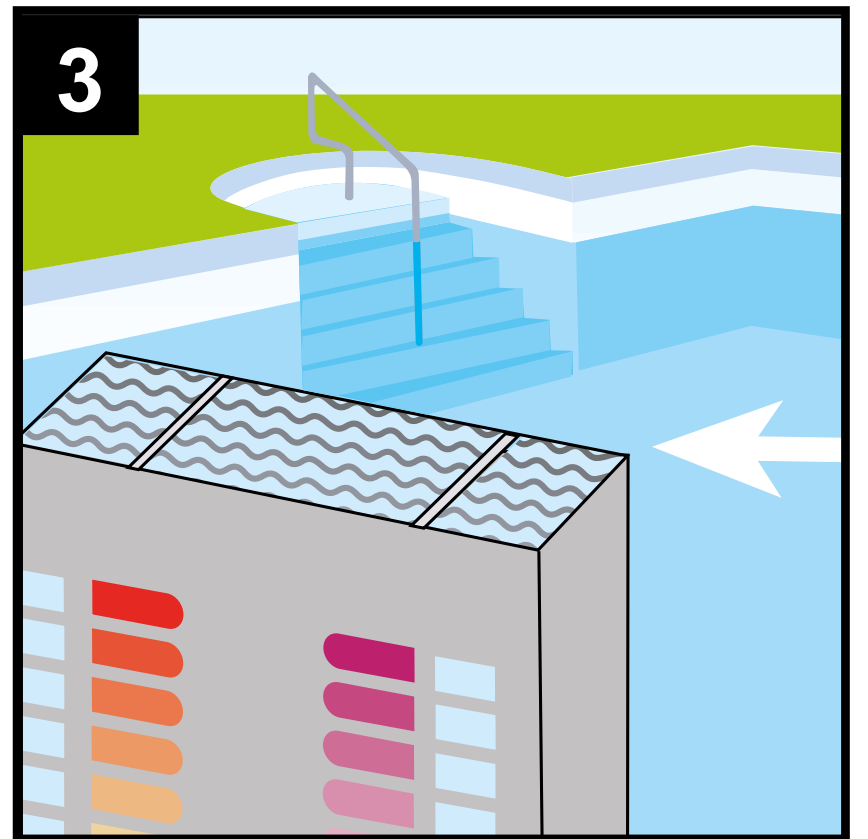
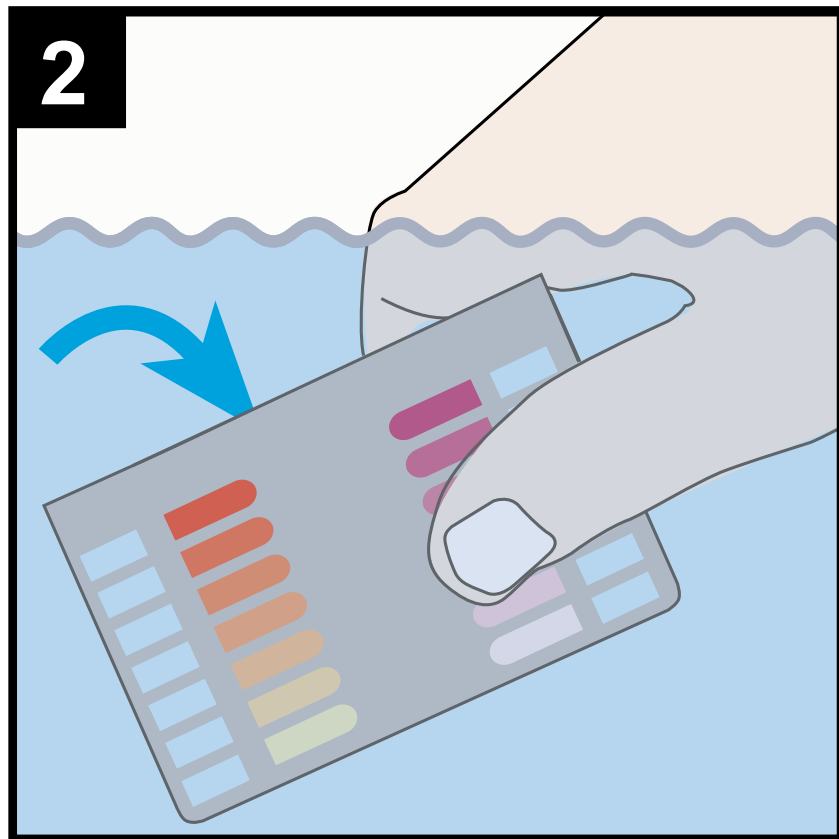
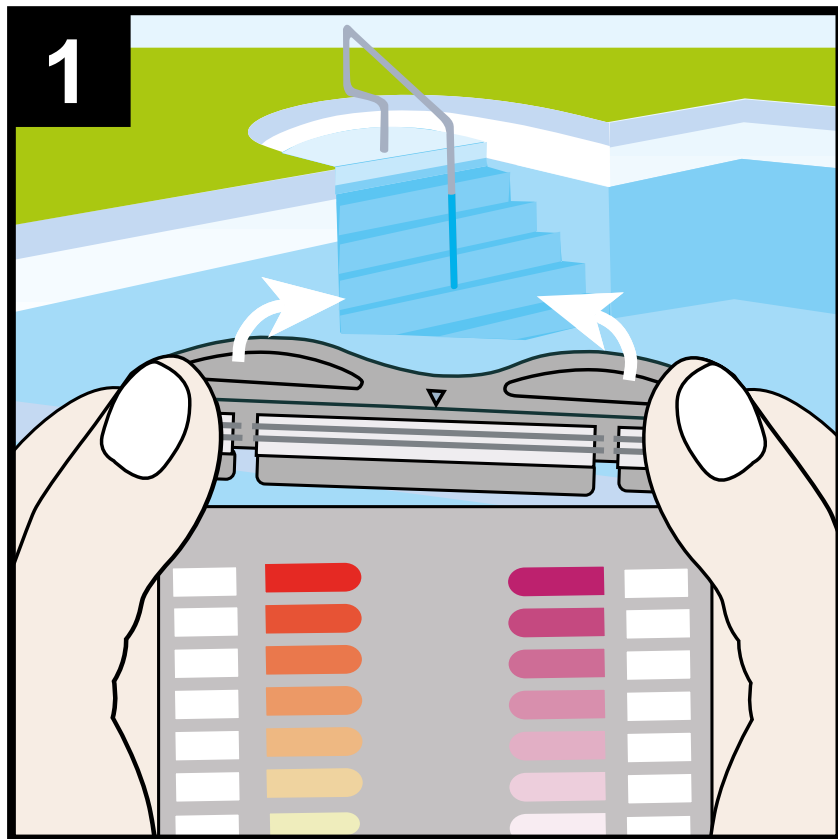
# pH/Cl

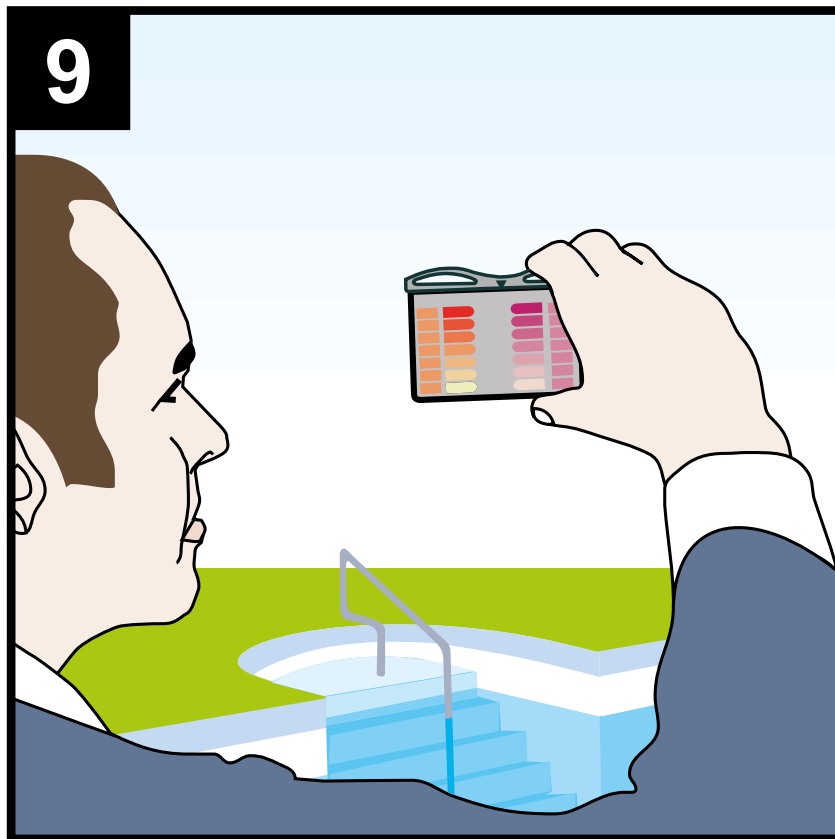
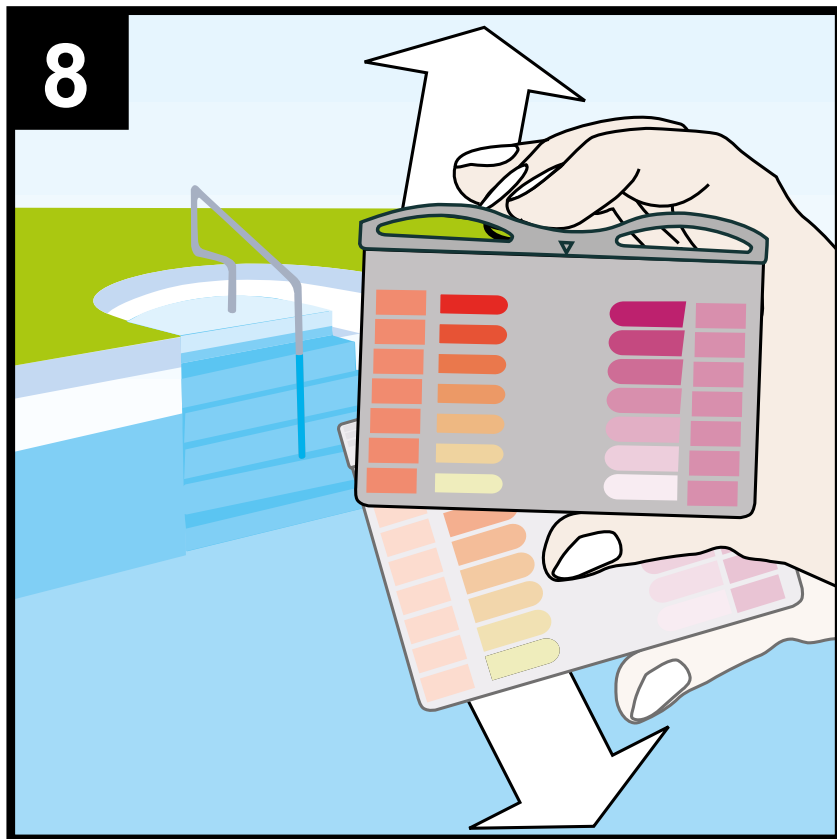
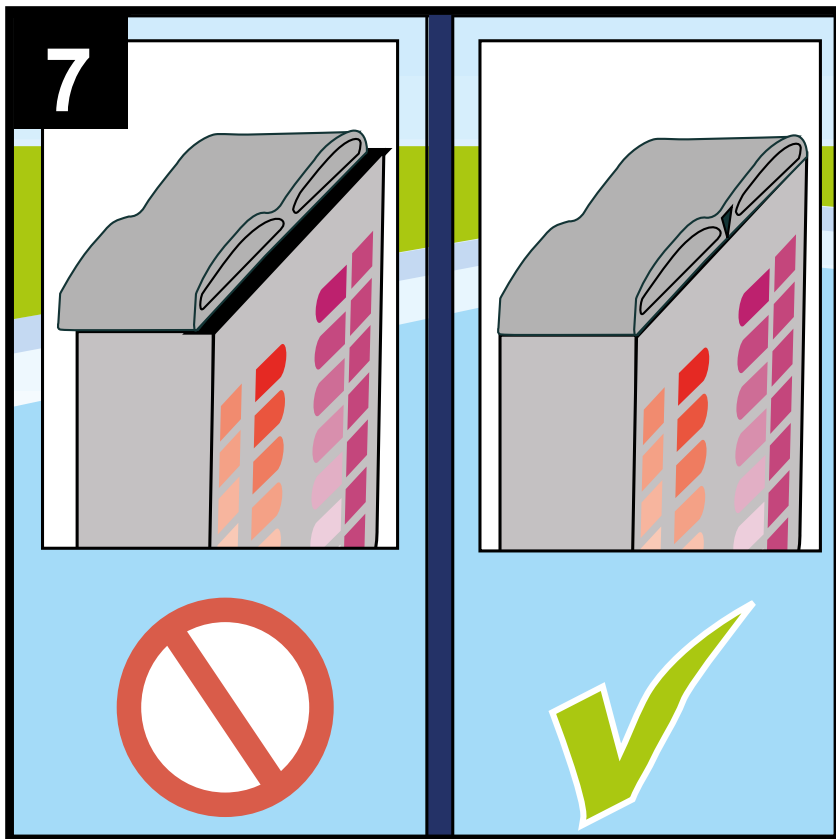
## Pooltester



# BAYROL

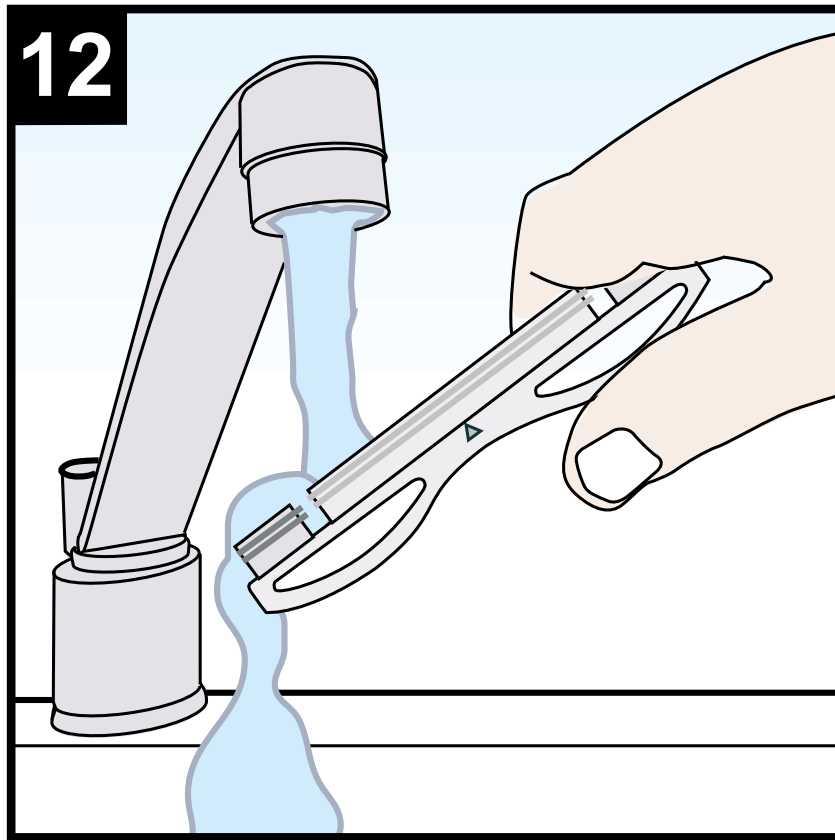
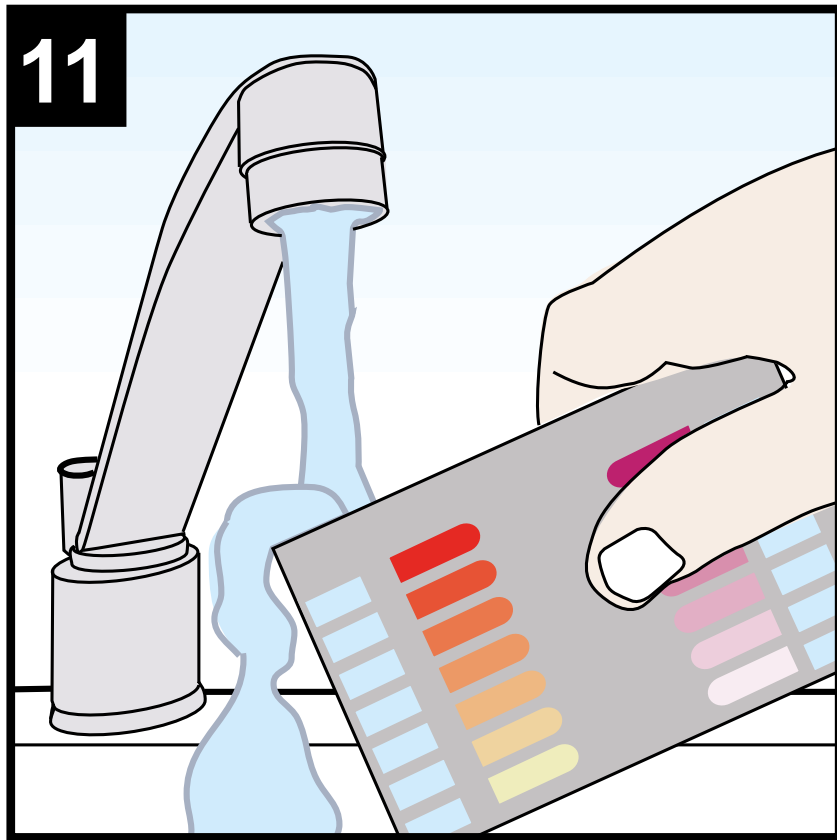
your pool & spa water expert





**10**

pH		Cl mg/l	
8.2			3.0
7.8			ok 2.0
7.6			ok 1.5
7.4			ok 1.0
7.2			ok 0.6
7.0			ok 0.3
6.8			0.1





# Bedienungsanleitung

## Wichtige Hinweise

- Bei über 10 mg/L freies Chlor kann der DPD-Farb-indikator ausbleichen.
- pH-Werte unter 6,8 ergeben immer eine Gelbfärbung.
- pH-Werte über 8,2 ergeben immer eine Rotfärbung.
- Bei sehr weichen Wässern sind Fehlmessungen möglich.

## Achtung

- Reagenztabletten sind ausschließlich für die chemische Analyse bestimmt und dürfen nicht für andere Zwecke verwendet werden.
- Reagenztabletten dürfen nicht in die Hände von Kindern gelangen.



# Mode d'emploi

## Remarques importantes

- Pour une teneur de chlore libre supérieure à 10 mg/L, l'indicateur DPD coloré peut se décolorer.
- Les valeurs de pH inférieures à 6,8 se caractérisent toujours par une coloration jaune.
- Les valeurs de pH supérieures à 8,2 se caractérisent toujours par une coloration rouge.
- Des erreurs de mesure sont possibles pour les eaux très douces.

## Attention

- Les pastilles de réactifs sont produites exclusivement pour l'analyse chimique; il est interdit de les utiliser pour d'autres objectifs.
- Maintenir impérativement les pastilles de réactifs hors de portée des enfants.



# Istruzioni

## **Avvertenze importanti**

- Oltre i 10 mg/L di cloro libero l'indicatore DPD cromatico può sbiancarsi.
- I valori pH al di sotto di 6,8 danno sempre una colorazione gialla.
- I valori pH al di sopra di 8,2 danno sempre una colorazione rossa.
- Con le acque di durezza molto ridotta si possono verificare misurazioni errate.

## **Attenzione**

- Le pastiglie di reagente sono destinate ad essere utilizzate esclusivamente per l'analisi chimica e non possono essere impiegate per altri scopi.
- Le pastiglie di reagente non devono essere lasciate alla portata dei bambini.



# Instruction Manual

## **Important**

- Levels of free chlorine above 10 mg/L can cause bleaching off the DPD colour.
- pH values below 6.8 also produce a yellow colouration, so a reading of 6.8 may be incorrect.
- pH values above 8.2 also produce a red colouration, so a reading of 8.2 may be incorrect.
- Incorrect measurements are possible where very soft water is involved.

## **Caution**

- The reagent tablets are only to be used for chemical analysis.
- They must not be used for any other purpose.
- Keep out of reach of children.

## **BAYROL Deutschland GmbH**

Robert-Koch-Str. 4 · D-82152 Planegg  
Tel. + 49 (0)89 857 010 · [www.bayrol.com](http://www.bayrol.com)

## **Interbayrol AG**

Untermüli 7 · CH-6304 Zug  
Tel. + 41 (0)41 7662 650 · [www.bayrol.com](http://www.bayrol.com)

## **BAYROL France S.A.S**

Ch. des Hirondelles · F-69570 Dardilly Cedex  
Tél. + 33 (0)892 707 992 (0,34 €/min) · [www.bayrol.fr](http://www.bayrol.fr)

## **BAYROL Ibérica S.A.U.**

Av. Diagonal 453 bis 1<sup>a</sup> · E-08036 Barcelona  
Tel. + 34 932 724 848 · [www.bayrol.es](http://www.bayrol.es)

## **EURAQUA S.r.l.**

Via Mozart · I-24040 Boltiere BG  
Phone + 39 (0)35 4195 218 · [www.euraqua.it](http://www.euraqua.it)



# **BAYROL**

your pool & spa water expert